



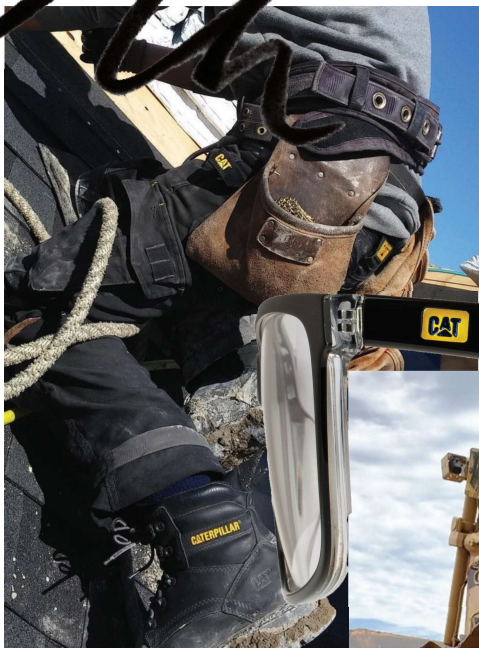
2025 OPTICAL COLLECTION



©2023 Caterpillar.

CAT, CATERPILLAR, LET'S DO THE WORK, their respective logos, "Caterpillar Corporate Yellow", the "Power Edge" and Cat "Modern Hex" trade dress as well as corporate and product identity used herein, are trademarks of Caterpillar and may not be used without permission.

CAT OPTICAL SS23 INSP0





CTO 3020

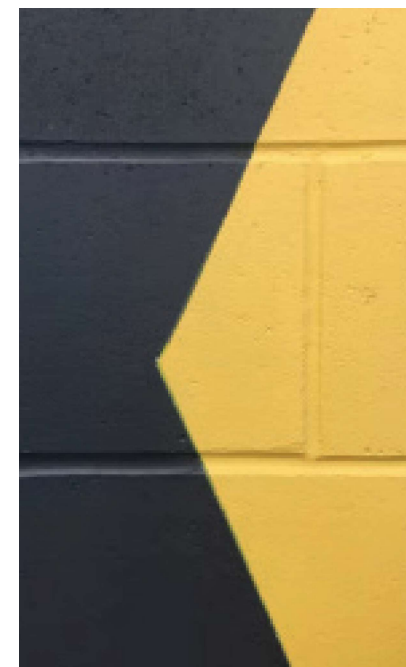
ACETATE FULL FRAME

59-17-150

B-41

BASE-450

- Handmade acetate frame
- Bespoke coloured core wire with logo
- Spring hinges
- Fully adjustable temples



CTO-3020-101 Gloss horn





CTO 3021

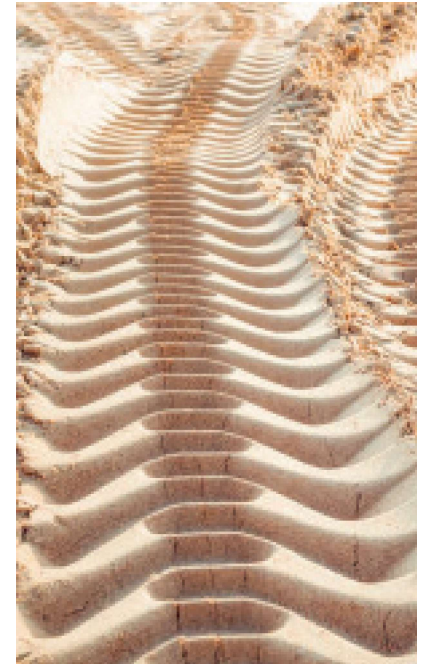
STAINLESS STEEL / ACETATE FULL FRAME

60-16-150

B-35.1

BASE-450

- Durable stainless steel front
- Spring hinges
- Laser etched logo
- Adjustable temples and nose pads



CTO-3021-003 Matte brown / Horn



CTO-3021-004 Matte black





CTO 3002

STAINLESS STEEL / ACETATE
SUPRA

58-20-150 B-41.7

- Durable stainless steel supra front
- Thin spring hinges
- Colour pops
- Adjustable temples and nose pads

XIFIT



CTO-3002-004 Matte black / Black / Red



CTO-3002-005 Matte gun / Tort / Blue



CTO-3002-010 Matte titanium / Navy / Lime



CTO 3003

STAINLESS STEEL
FULL FRAME

58-17-150 B-39.4

- Durable stainless front with rimwire
- Two tone sheet metal temples
- Laser etched logo
- Adjustable temples and nose pads

XIFIT



CTO-3003-005 Matte gun



CTO-3003-006 Matte navy / Gun



CTO 3005

STAINLESS STEEL / ACETATE
FULL FRAME

56-15-145 B-37.2

- Durable stainless steel front with rimwire
- Full acetate temple with lasered logo plaque
- Spring hinges
- Adjustable temples and nose pads

XIFIT



CTO-3005-003 Matte brown / Brown carbon pattern



CTO-3005-010 Matte titanium / Brown
amber horn



CTO 3006

MONEL / ACETATE

FULL FRAME

56-16-145 B-37

- Full frame rimwire front
- Thin spring hinges
- Colour pops
- Adjustable temples and nose pads

XIFIT



CTO-3006-004 Matte black / Black / Red



CTO-3006-005 Matte gun / Black / Grey horn



CTO BEZEL

HANDMADE ACETATE
FULL FRAME

55-16-145 B-35

- Handmade acetate front & temples
- Fully adjustable temple tips
- Sleek built-in spring loaded monoblock hinge



CTO-BEZEL-105 Matte grey crystal



CTO-BEZEL-109 Gloss green horn

Adjustable parts

Adapted temple width contours

Spring loaded

Built in monoblock

Specially adapted end piece





CTO LEDGER

HANDMADE ACETATE
FULL FRAME

53-17-140 B-37

- Handmade acetate frame
- NEW 180° flexible hinges
- Fully adjustable temple tips



CTO-LEDGER-103 Gloss brown out, amber horn in

CTO-LEDGER-104 Matte black / Matte black out, red crystal in

Adjustable parts

Adapted temple width contours

Spring loaded

Built in monoblock

Specially adapted end piece





CTO DORMER

HANDMADE ACETATE
FULL FRAME

60-17-145 B-41

- Handmade acetate frame
- Fully adjustable temple tips
- Engine plate logo plaques



CTO-DORMER-102 Gloss brown horn

Adjustable parts



Adapted temple width contours

Spring loaded



Built in monoblock

Specially adapted end piece





CTO 3016

MONEL / ACETATE
FULL FRAME

57-17-150 B-43.5

- Double bridge square aviator
- Integral monoblock spring hinges
- Laser etched logo
- Adjustable temples and nose pads

XIFIT



CTO-3016-001 Matte gold



CTO-3016-004 Matte black



CTO-3016-005 Matte gunmetal



CTO FOREMAN

HANDMADE ACETATE

FULL FRAME

60-17-150 B-44

Engine plate temple logo plaques

Fully adjustable temple tips

XL fit for big comfort

Handmade acetate frame

XLFIT



CTO-FOREMAN-103 Gloss brown horn

Adjustable parts

Adapted temple width contours

Spring loaded

Built in monoblock

Specially adapted end piece



A construction worker wearing a yellow hard hat with the CAT logo, sunglasses, and a dark jacket is sitting in the operator's seat of a yellow and blue CAT machine. The machine's door is open, and the worker is looking towards the camera. The background is a clear blue sky. On the side of the machine, there is a large white CAT logo and a red box with the letters 'T & E'.

CAT[®]

**STRENGTH
ENGINEERING EXCELLENCE
EFFICIENCY**



CTO INSTALL

STAINLESS STEEL / HANDMADE
ACETATE - SUPRA
58-17-145 B-32

- Supra style as less is more
- Fully adjustable nose pads and tips
- XL fit for big comfort
- Handmade acetate tips



CTO-INSTALL-005 Rubberized matte gun / Gloss black, white and grey layered



CTO-INSTALL-004 Matte black / Matte black tort



CTO-INSTALL-006 Matte navy / Gloss black and blue crystal

Adjustable parts



Adapted temple width contours



Spring loaded



Built in monoblock

Specially adapted end piece



CTO GANISTER

STAINLESS STEEL / HANDMADE
ACETATE - FULL FRAME

60-17-150 B-40.9

- XL fit for big comfort
- Cat digger inspired monoblock spring hinge
- Fully adjustable nose pads and temple tips

XLFIT



CTO-GANISTER-005 Satin gun



CTO-GANISTER-004 Matte black



CTO-GANISTER-006 Matte dark navy

Adjustable parts

Adapted temple width contours

Spring loaded

Built in monoblock

Specially adapted end piece





CTO 3067

MEMORY METAL · SUPRA · 58-16-145 B-36.5
BASE-500 · ED-62.5

MEMORY METAL XL supra rim wire rectangular front with thin temples and lasered CAT logo.



CTO-3067-003 Matte brown



CTO-3067-006 Matte navy



CTO-3067-008 Matte grey

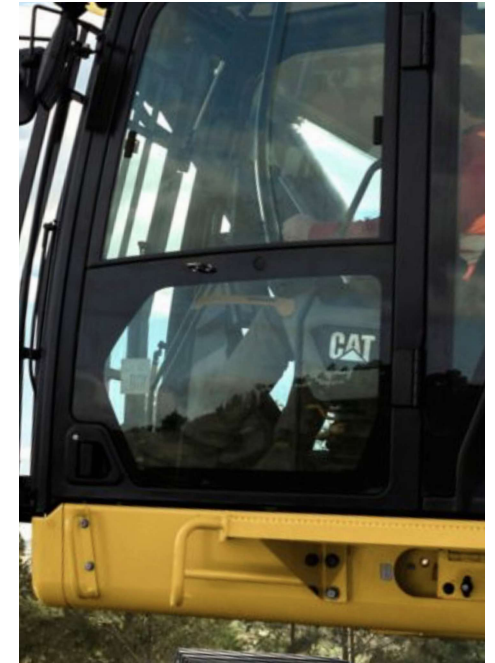




CTO 3071

MEMORY METAL · FULL FRAME · 57-19-150 B-37.2
BASE-450 · ED-61.2

MEMORY METAL XL full rim wire rectangular front with thin temples and lasered CAT logo.



CTO-3071-003 Matte brown



CTO-3071-004 Matte black



CTO-3071-005 Matte gun





CTO 3051

ACETATE · FULL FRAME · 54-19-145 B-39.4
BASE-450 · ED-61.4

Handmade acetate full frame
featuring adjustable temple tips
and engine plate logo plaques.



CTO-3051-106 Gloss blue horn



CTO-3051-113 Gloss grey crystal / Matte black



CTO-3051-127 Matte black





CPO 3541

STAINLESS STEEL • ACETATE • RIM WIRE • 56-17-145 B-36.4
BASE-450 • ED-60.9

Two-tone sheet stainless steel front with rim wire. Ultra thin temples with integrated spring hinges.



CPO-3541-003 Matte brown / Gun



CPO-3541-006 Matte navy / Black



CPO-3541-007 Matte green / Gun

PRECISION

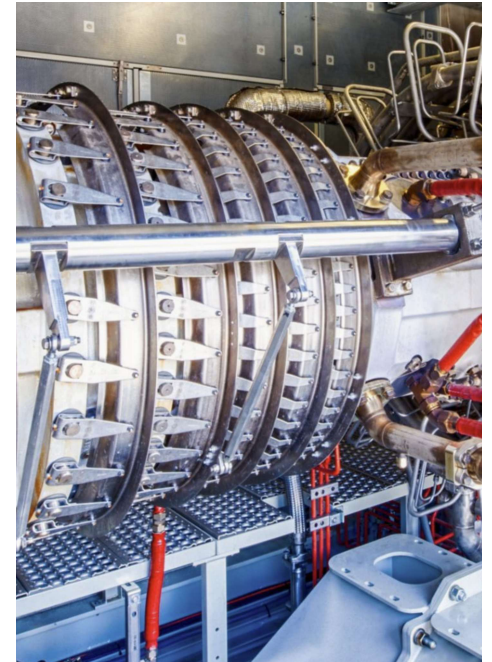




CPO 3542

STAINLESS STEEL • ACETATE • FULL FRAME • 59-19-145 B-44
BASE-500 • ED-65.6

XL fit frame featuring milled stainless steel front with rounded acetate temples.



CPO-3542-003 Matte brown / Gun



CPO-3542-004 Matte black / Bronze



CPO-3542-006 Matte navy / Gun

PRECISION

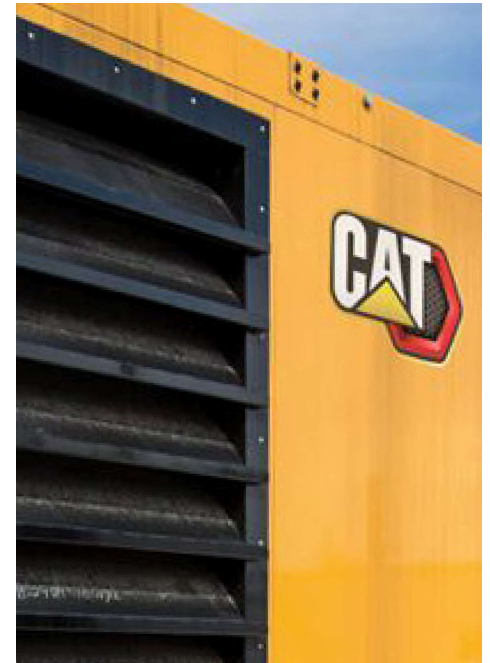




CTO 3019

ACETATE • FULL FRAME • 58-18-150 B-40.9 • BASE-500

- Handmade acetate frame
- Tread inspired logo plaque
- Spring hinges
- Fully adjustable temples



CTO-3019-104 Matte black



CTO-3019-106 Gloss navy horn crystal



CTO-3019-108 Gloss grey horn





CTO 3022

STAINLESS STEEL / ACETATE • FULL FRAME • 59-18-150
B-41.2 • BASE-450

- Durable stainless steel front
- Bespoke coloured core wire with logo
- Spring hinges
- Adjustable temples and nose pads



CTO-3022-004 Matte black



CTO-3022-005 Matte gun / Grey crystal



CTO-3022-006 Matte navy

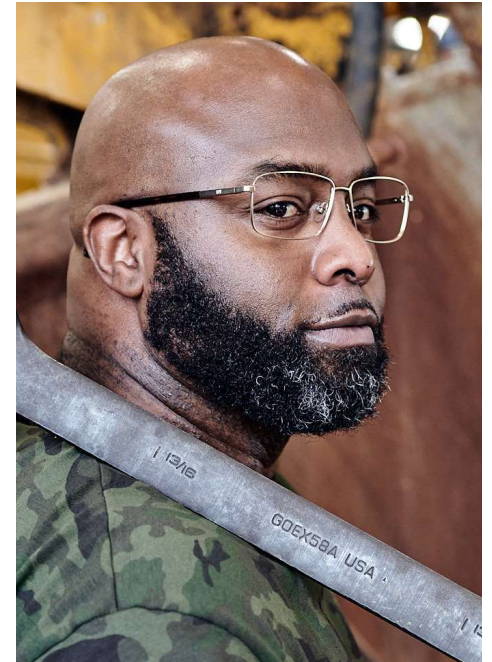




CTO 3028

MONEL / ACETATE • FULL FRAME • 62-15-145 B-39.9
• BASE-450

- Classic rim wire front
- Bespoke coloured core wire with logo
- Integral spring hinges
- Adjustable temples and nose pads



CTO-3028-001 Matte gold / Tort



CTO-3028-006 Matte navy / Grey



CTO-3028-204 Gloss black / Black

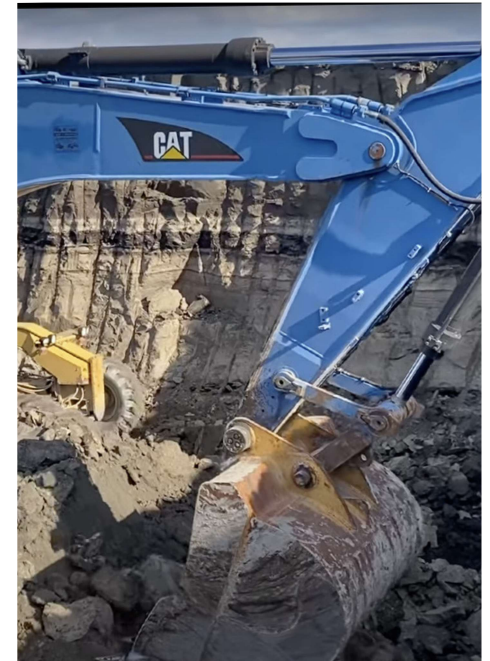




CTO 3018

ACETATE · FULL FRAME · 56-17-145 B-39.7
BASE-450 · ED - 61.3

- Handmade acetate frame
- Ultra thin soft square
- Spring hinges
- Fully adjustable temples



CTO-3018-104 Gloss black



CTO-3018-106 Gloss blue crystal



CTO-3018-162 Gloss Burgundy crystal

